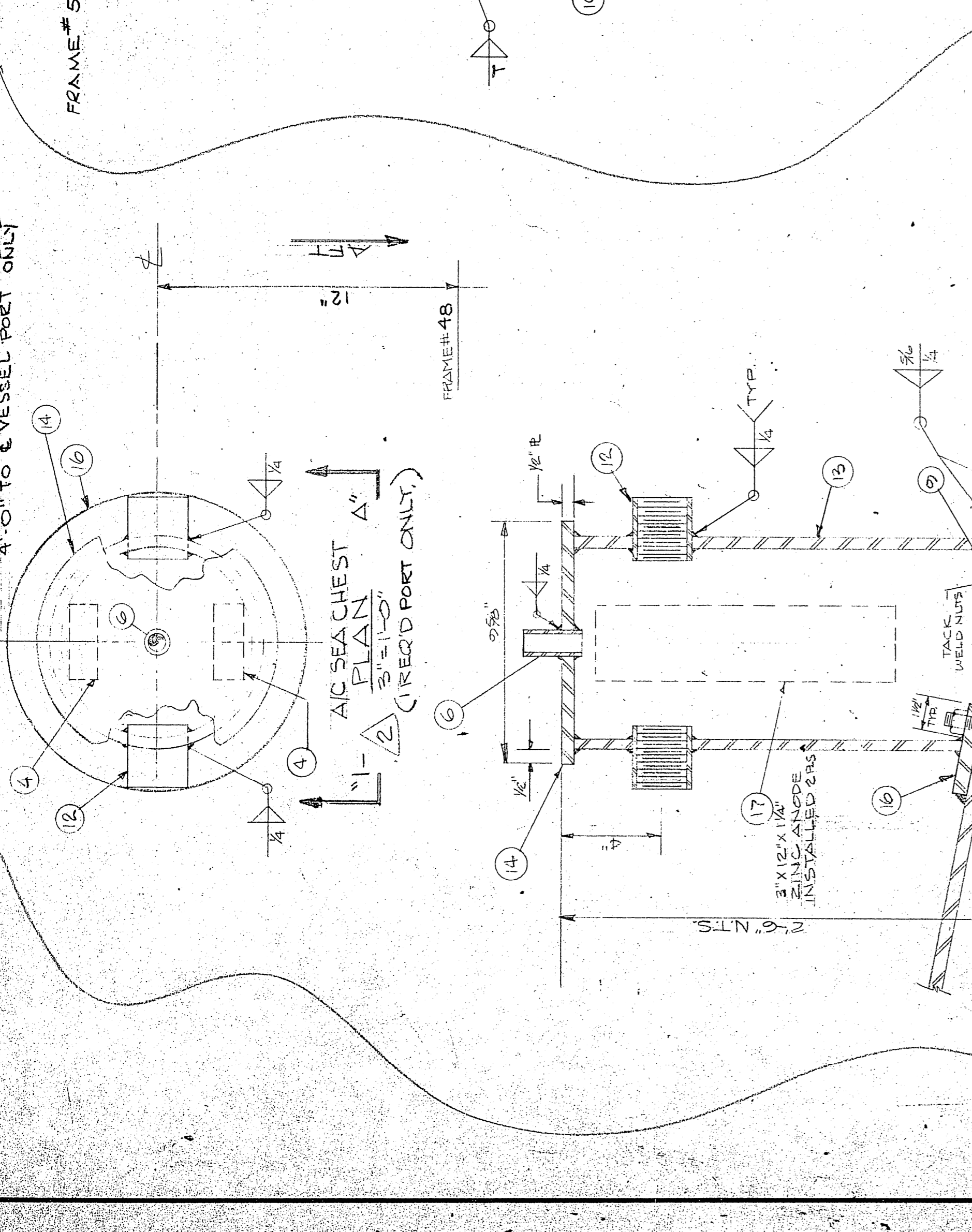
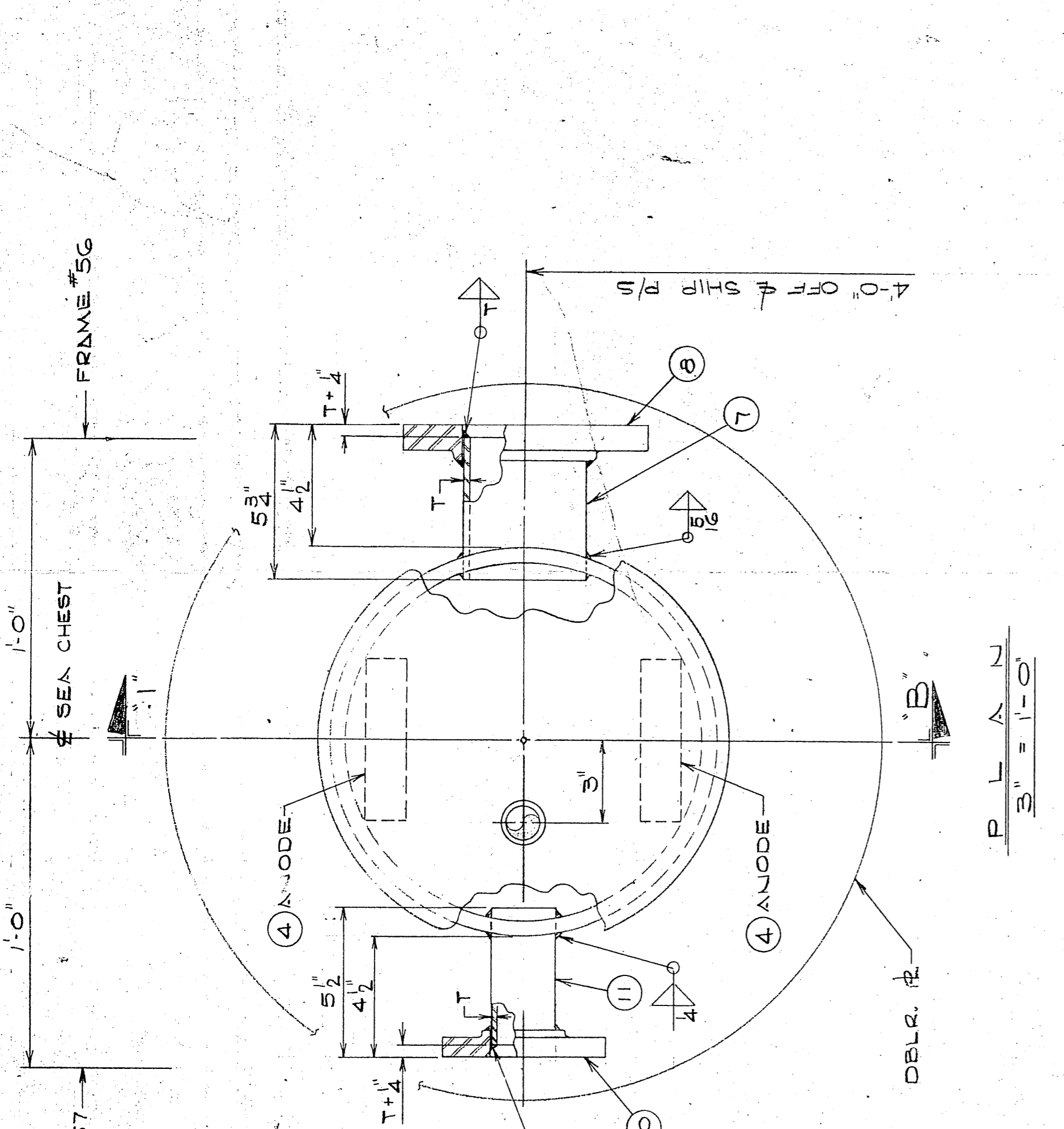
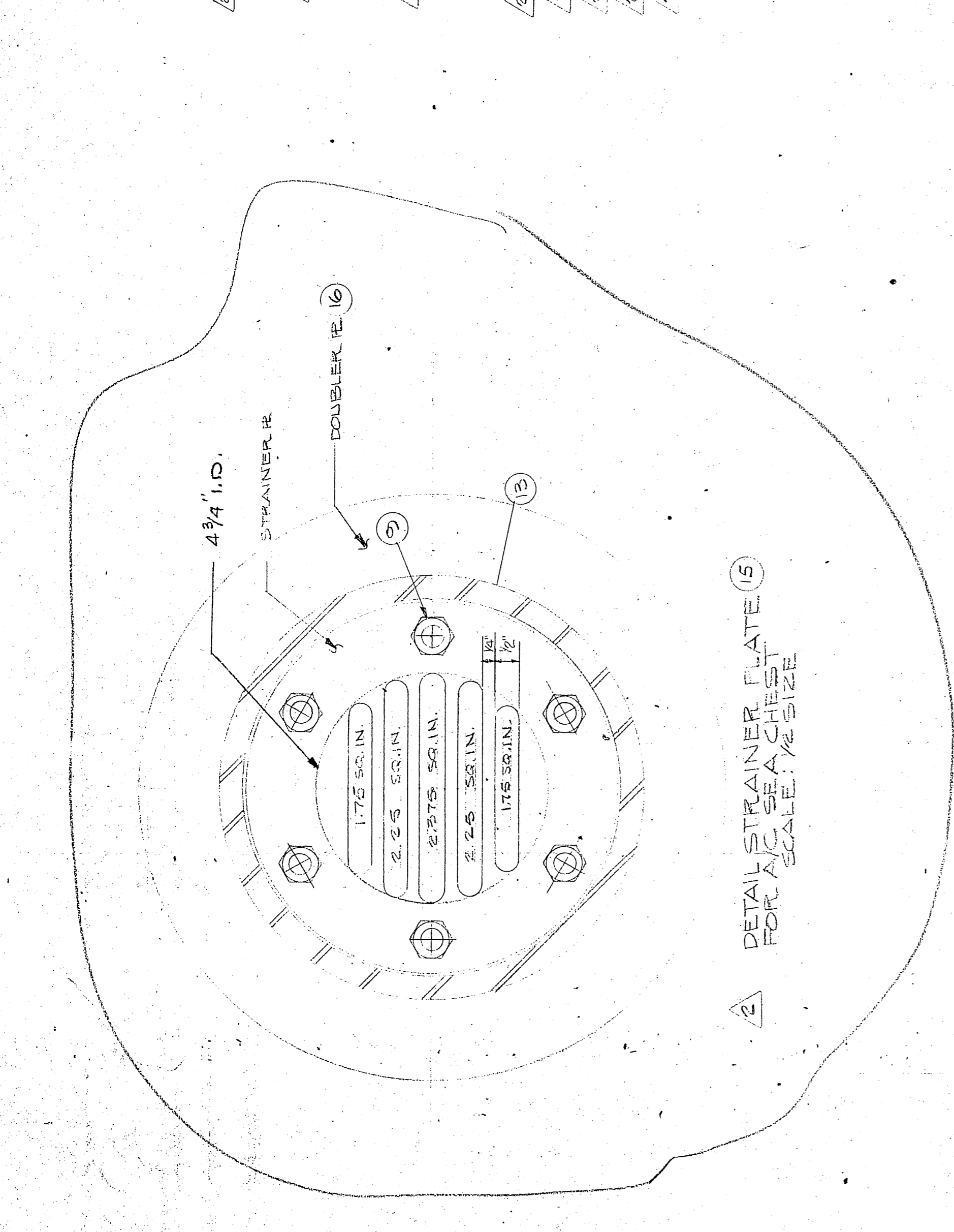
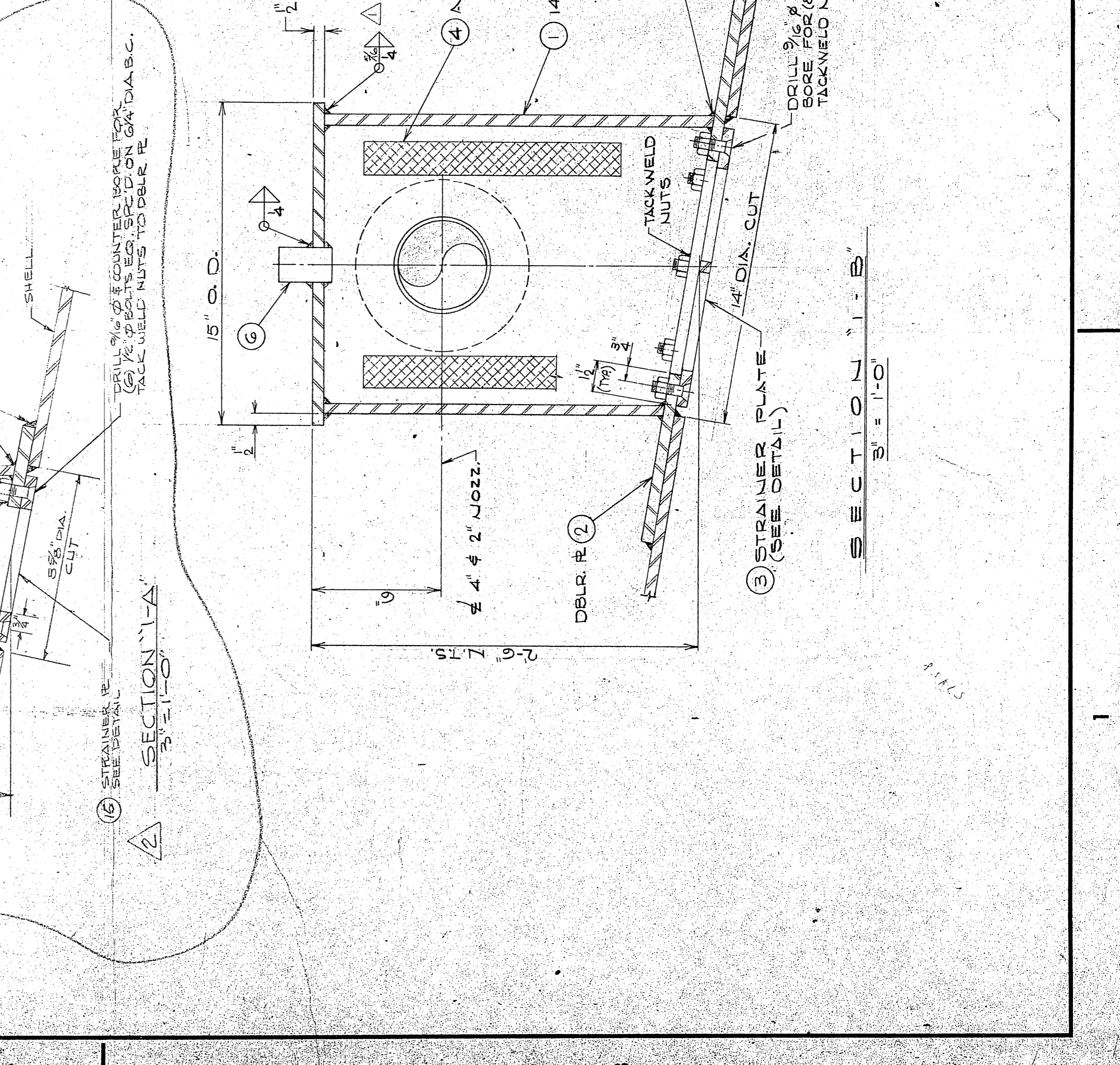
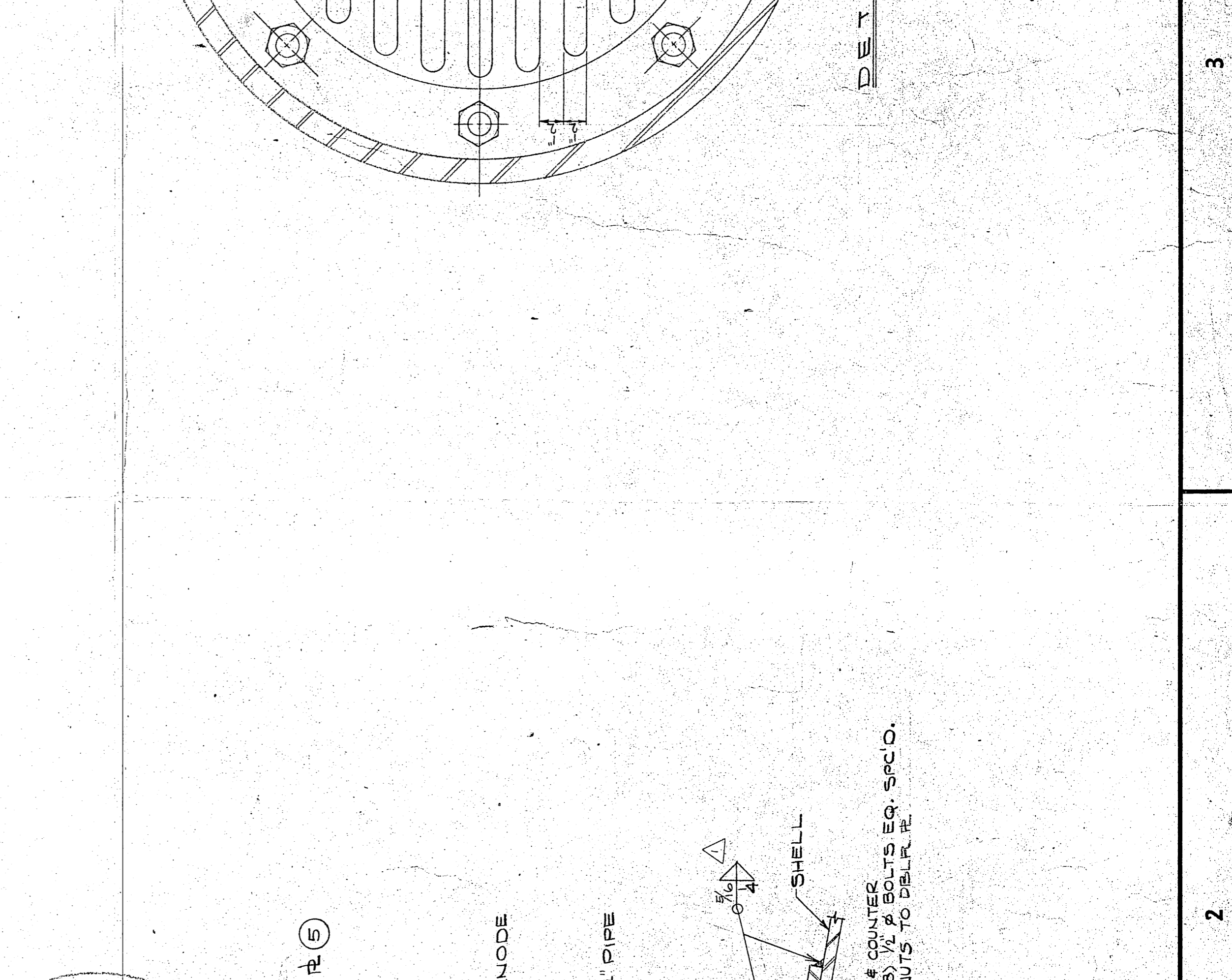
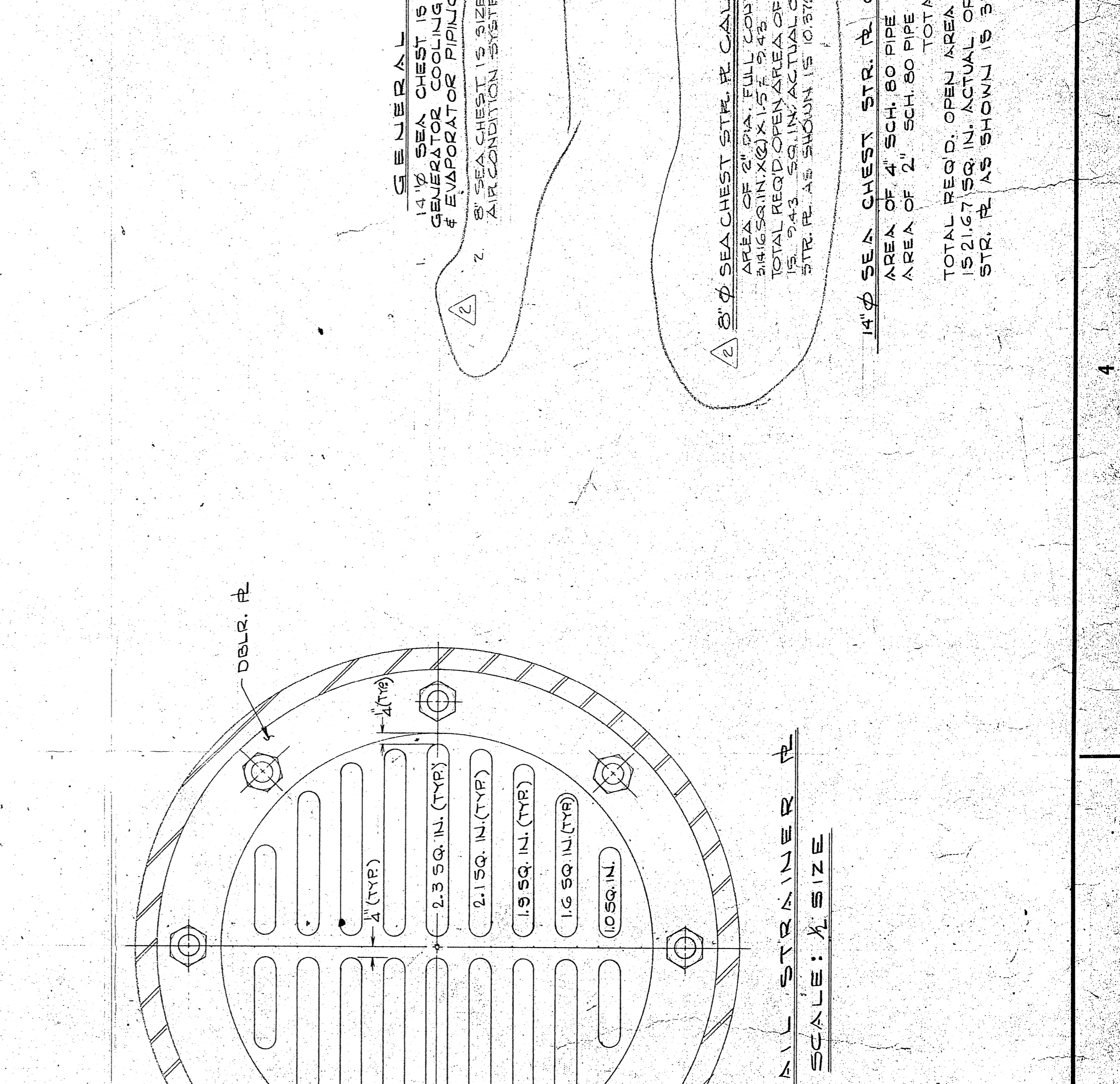


NO.	QTY	DESCRIPTION	UNIT	NO.	DATE
1	4	PIPE, BLK. SMLS ASTM A588			
2	2	FL. 2" O.D. x 10" I.D. STL.			
3	2	FL. 1 1/2" O.D. STL.			
4	4	ZINC ANODE, 6" x 12"			
5	2	FL. 15" O.D. STL.			
6	3	CPG. F.S. SCHED 3000#			
7	10	PIPE, SCH 40 SMLS BLK. A588			
8	2	FLANGE, 150# FF SO.			
9	22	CTSK BOLTS W/ NUTS S-STL.			
10	2	FLANGE, 150# FF SO.			
11	2	PIPE, SCH 40 SMLS BLK			
12	2	CPG. F.S. SCHED 3000#			
13	3	PIPE, BLK. SMLS ASTM A-588			
14	1	FL. 2" O.D. x 10" I.D. STL.			
15	1	FL. 1 1/2" O.D. STL. x 4 1/2" I.D.			
16	1	DBLR. PL. 1/4" O.D. x 4 1/2" I.D.			
17	2	ZINC ANODE, 6" x 12"			



NO.	DATE	DESCRIPTION	BY
1	1-24-73	APPROB. BY: [Signature]	[Signature]
2	4-2-73	REV. WELD. STIM. PER A588 LTR 4-5-73	[Signature]



**GENERAL NOTES**

- 14" SEA CHEST IS SIZED TO SERVE GENERATOR COOLING SYSTEM (4" PIPE) & EVAPORATOR PIPING SYSTEM (2" PIPE)
- SEA CHEST IS SIZED TO SERVE AIR CONDITION SYSTEM (2" PIPES)

14" SEA CHEST STR. PL. CALCS  
AREA OF 8" DIA. FULL COMP. = 50.27 SQ. IN.  
TOTAL REQ. OPEN AREA OF STR. PL. IS 94.3 SQ. IN. ACTUAL OPENING OF STR. PL. AS SHOWN IS 65.15 SQ. IN.

14" SEA CHEST STR. PL. CALCS  
AREA OF 4" SCH. 40 PIPE = 11.50 SQ. IN.  
AREA OF 2" SCH. 40 PIPE = 2.95 SQ. IN.  
TOTAL 14.45 SQ. IN.  
TOTAL REQ. OPEN AREA OF STR. PL. IS 21.67 SQ. IN. ACTUAL OPENING OF STR. PL. AS SHOWN IS 31.0 SQ. IN.

**OFFICE COPY**

U.S. NAVAL SHIP SYSTEMS COMMAND  
WASHINGTON D.C. 20380

OCEANOGRAPHIC RESEARCH SHIP  
AGOR (UTILITY) CLASS

HALTER MARINE SERVICES, INC.  
P.O. BOX 89666 NEW ORLEANS, LA. 70189

GENERATOR SEA CHEST

SCALE: AS SHOWN DATE: DEC. 72  
DRAWN BY: [Signature] CKD BY: [Signature]  
HALTER: [Signature] DATE: 2/8/73  
JOB NO.: 1258  
NAVSHIPS NO.: AGOR-21-120-001  
DWG. NO.: S-21  
SHT. 2 OF 2  
REV. 2

00067